

- Marijuana Perspectives in CO: Community strategies**
- Tourist Industry
 - Housing
 - Education for multiple audiences

Marijuana Prevention Approaches in Communities

- Office of Behavioral Health focuses funding on addressing all substances
- Coalitions
- Evidence Based Programs - Guiding Good Choices, In Shape Prevention Plus Wellness, Life Skills Training, Project Towards No Drugs, Strengthening Families



Socio-Ecological Model



Retail Marijuana Education Program: What?

The mission of the Retail Marijuana Education Program (RMEP) is to educate Coloradans on the parameters of **safe, legal and responsible** use of retail recreational marijuana in Colorado in order to mitigate negative health outcomes associated with legalization, including illegal youth use.



Retail Marijuana Education Program: How?

- Educational awareness campaigns and materials:
 - Laws
 - Youth prevention
 - Spanish speaking community members
 - Retailers
 - Community partners
 - Askable adults
 - Future: Pregnant and breastfeeding women
 - LGBQ youth



Retail Marijuana Education Program: Related to Blueprints ?

- Utilizing the Communities that Care (CTC) Process
- Funding Communities to implement CTC statewide



Communities that Care

- \$7.2 million to implement the CTC model statewide
- Goal of funding: Prevent youth substance initiation, use and abuse using a health equity lens.
- Highlight societal-level strategies
 - Including policy and systems improvements and changes.



Communities that Care

- Focused on shared risk and protective factors.
- The focus for the Colorado CTC funding will be on:
 1. Social norms
 2. Community connectedness
 3. Youth skills and resilience



 COLORADO

Communities that Care

- Environmental strategies could include:
 - Support childcare costs: policy changes to designate local excise or sales taxes on substances to lower costs
 - Stricter local licensing requirements: marijuana establishment regulations can be stricter than state policies
 - Policy changes: designate funds for prevention dollars in local ordinances through sales tax

 COLORADO

Collaboration

- State level collaboration is key
- New approach that is exciting because:
 - Strengthen community coalitions
 - Meet communities where they are at
 - Leveraging funding
 - Providing funding and tools that encompasses a comprehensive approach to substance abuse prevention that touches on all aspects of the socio-ecological model

 COLORADO

Key Takeaways

1. Be proactive.
2. Engage partners and diverse audiences now.
3. Leverage funding.

 COLORADO



 COLORADO

Contact Information

Erin C. Flynn, MPH

Marijuana Education and Youth Prevention
Coordinator Retail Marijuana Education Program



COLORADO
Department of Public
Health & Environment

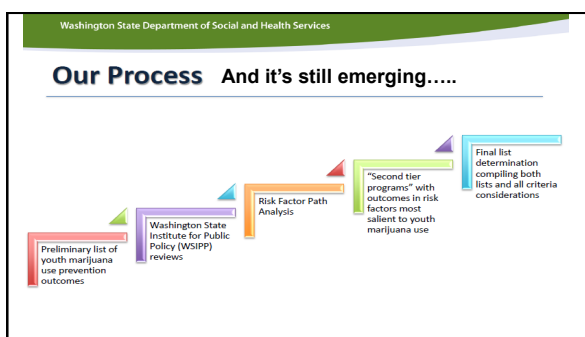
P: [303.692.6435](tel:303.692.6435) | 4300 Cherry Creek Drive South, Denver, CO 80246

erin.flynn@state.co.us | www.colorado.gov/cdphe

 COLORADO



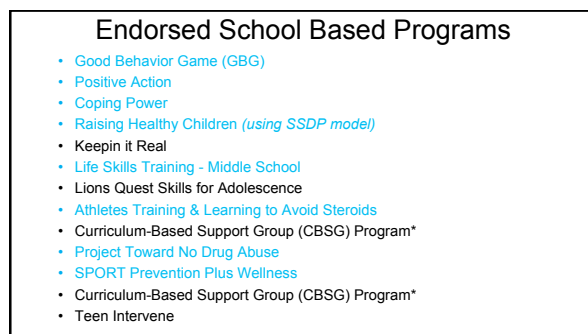
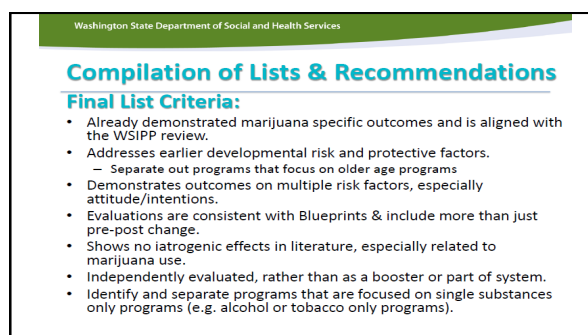
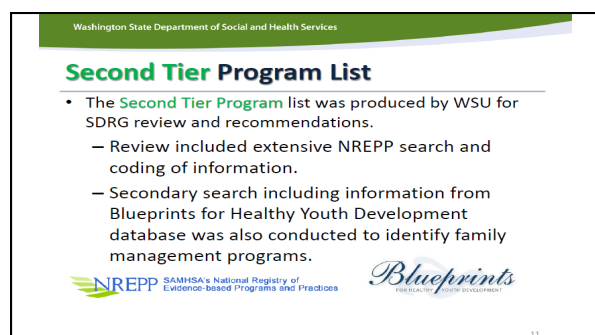
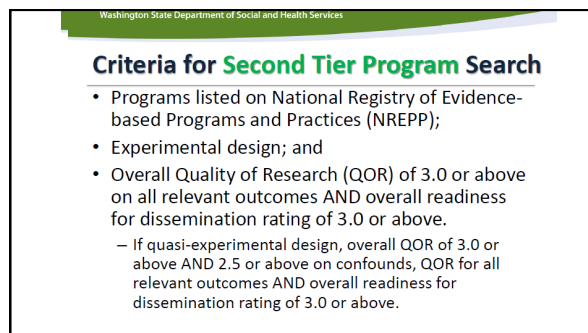
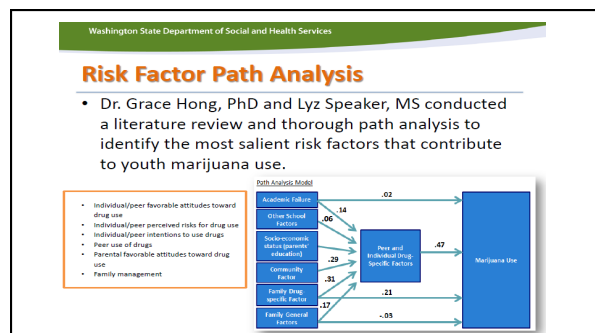
“...at least eighty-five percent must be directed to evidence-based and cost beneficial programs and practices that produce objectively measurable results:”



1. Consulted with the University of Washington's Social Development Research Group (SDRG), Dr. Kevin Haggerty, PhD and Dr. Rico Catalano, PhD.
2. Established our criteria for Evidence-based programs with youth marijuana use prevention or reduction outcomes .
3. SAMHSA's CAPT Western Resource Team compiled program information obtained from secondary sources, not the original journal articles, to provide to DBHR for review.
 - Nine (9) websites were searched in total.

- September 2014 / October 2014 WSIPP published their review of the preliminary list of 13 programs + additional programs they selected and ranked 20 prevention programs total.

[illegible]



Endorsed Community Level Programs

- Communities that Care
- PROSPER
- Project Northland (*includes Class Action*)
- Project STAR
- Mentoring for students: Community-based

Endorsed Environmental Strategies

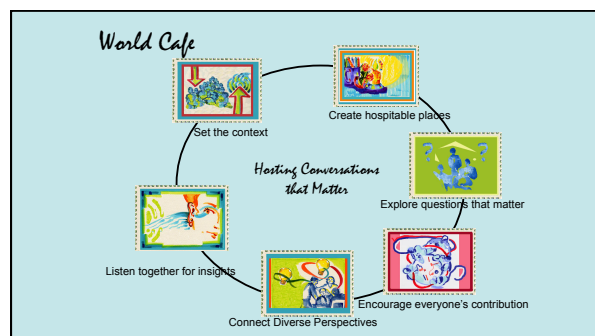
- Policy Review and Development
- Purchase Surveys coupled with Reward and Reminder
- Restrictions at Community Events
- Social Norms Marketing

Three Lessons from Washington State

1. Use marijuana \$ to fund evidence based prevention
 - Use the highest level of rigor—Blueprints programs
 - Ensure there is \$ for TA infrastructure
2. Ensure you have \$ BEFORE legalization occurs
3. Fund your state survey that focuses on outcomes and risk and protective factors

World Cafe

The World Café is an innovative yet simple method for hosting conversations about questions that matter. As a process, the World Café can evoke and make visible the collective intelligence of any group, thus increasing people's capacity for effective action in pursuit of common aims.



Principles for listening in the Cafe

1. Listen as if each person were truly wise, and sharing some truth that you may have heard before but do not yet fully grasp
2. Listen with an openness to be influenced by the speaker
3. Listen to support the speaker in fully expressing themselves
4. Listen for deeper questions, patterns, insights and emerging perspectives
5. Listen for what is not being spoken along with what is being shared

Three Questions that Matter

1. What lessons have we learned from alcohol and tobacco that we can apply to marijuana prevention? What might be unique to marijuana?
2. What recommendations for policy changes related to marijuana use do you think would be important for your state or community?
3. How can we effectively promote or endorse evidence based programs when they haven't been tested in the context of legalized marijuana?

World Café Directions

- 6 people to a "group"
- One person will stay at the table to act as "host", determine who that is—they act as the recorder
- Every 15 minutes we will rotate

Sharing Collective Discoveries

- Each Host...share the most powerful insight from your collective conversations
- What is emerging here?
- If there was a single voice in the room, what would it be saying?
- What deeper questions are emerging as a result of these conversations?