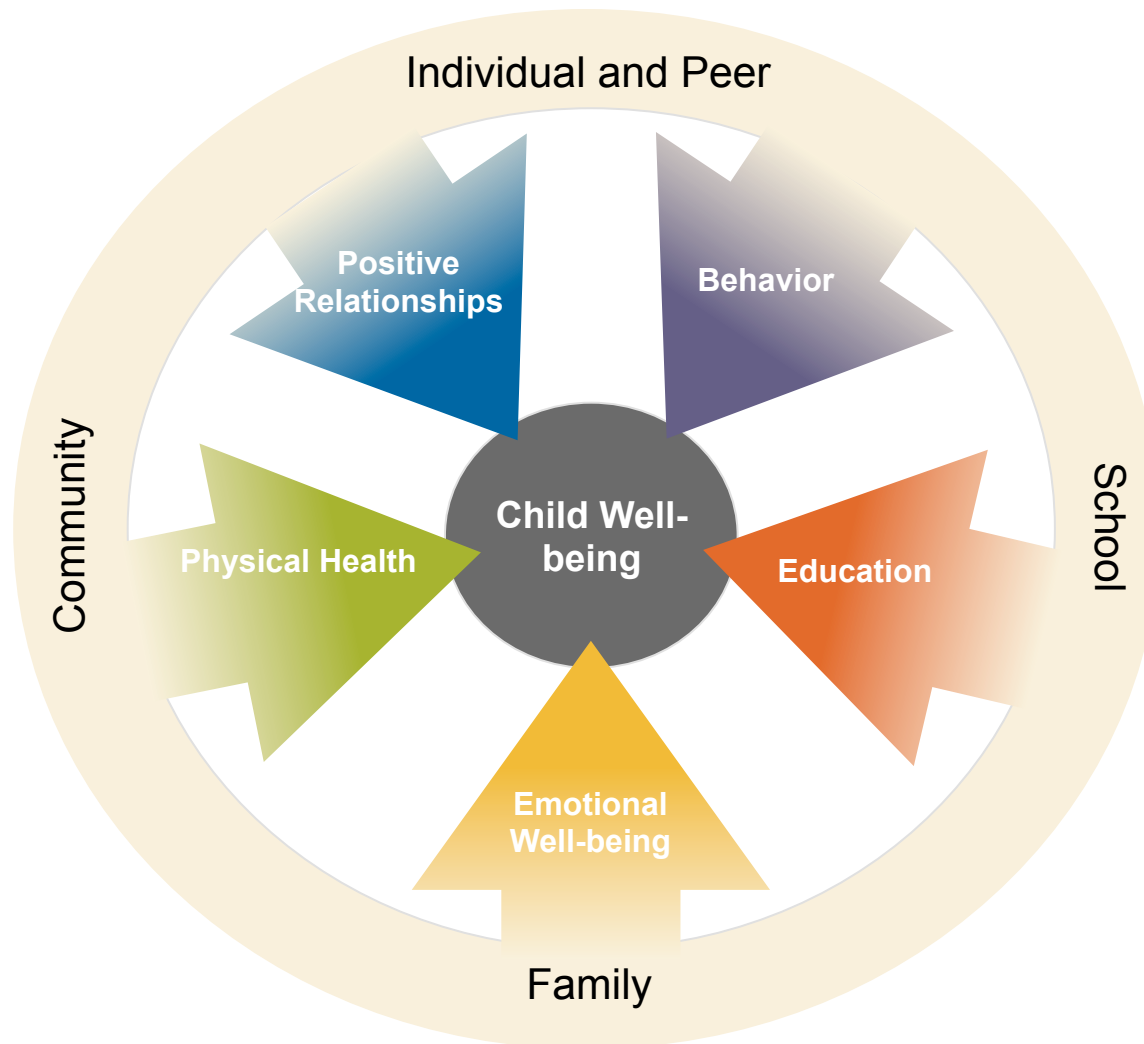


The Annie E. Casey Foundation
develops solutions to
build a brighter future for
children, families
and communities.



What is Required for Young People to Be Successful?



The Vision Behind Evidence2Success

Match proven programs to need

Local Data

Realign small percentage of public spending to support a balanced portfolio across types of prevention

Sustainability

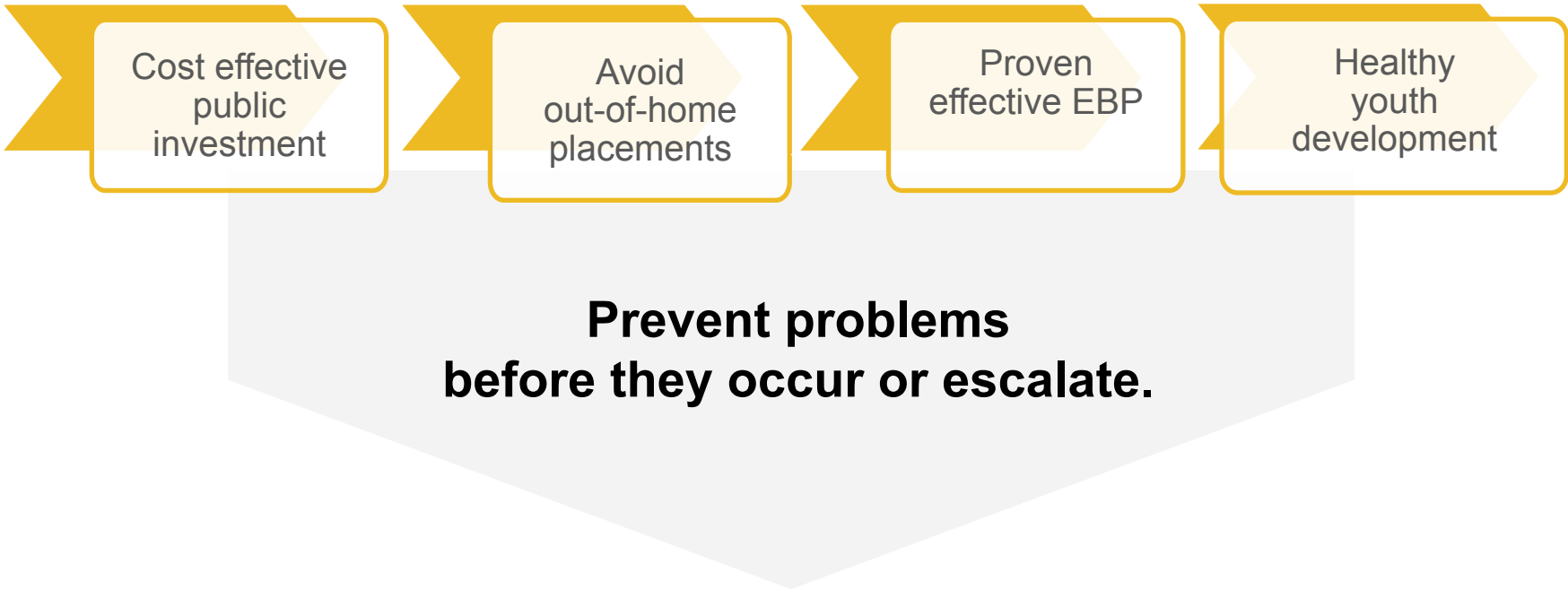
Achieve improved child and youth well-being outcomes

Birth to 18

Increase the supply and demand for evidence-based programs

Evidence2Success

Making the Case for Prevention



Cost effective
public
investment

Avoid
out-of-home
placements

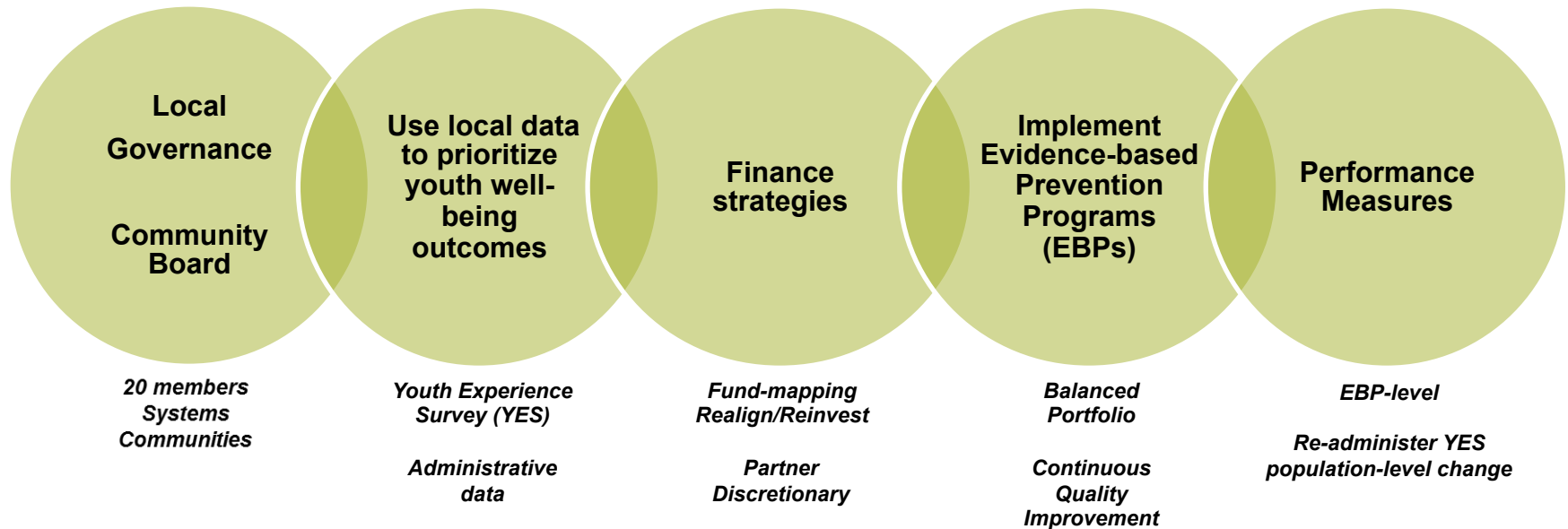
Proven
effective EBP

Healthy
youth
development

**Prevent problems
before they occur or escalate.**

The Evidence2Success Framework

5 core elements



The Five Phases Provide a Roadmap



1

GET STARTED

Engage city, public system, school, neighborhood and community leaders

Designate a citywide coordinator

Engage community board

Begin fund mapping

Conduct Youth Experience Survey



2

GET ORGANIZED

Expand community board

Build all partners' capacity to engage in joint decision making

Educate and inform community and systems

Orient community board

Identify opportunities to shift funding



3

DEVELOP COMMUNITY PROFILE

Produce a "big picture" view of child well-being

Work to interpret data

Develop broad strategy focused on priority outcomes, risk factors and protective factors

Identify opportunities to transform program and service delivery



4

CREATE A PLAN

Select tested, effective programs to advance broad strategy

Develop short- and long-term action plans

Develop financing strategies to support proven programs

Share action plan



5

IMPLEMENT AND EVALUATE

Finalize plans and train providers

Engage the community in recruitment

Implement proven programs and monitor performance

Celebrate successes

Track progress and make changes as needed

Identify service providers

Evidence2Success Communities



- Locality with at least 100,000 residents
- Focus neighborhoods where significant financial resources are spent on children



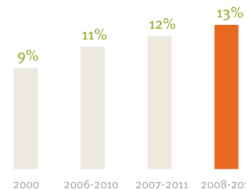
Partnership of
government systems,
elected officials and
residents



Commitment to provide
and shift public funding
and to share funding
data



Commitment of school
system to administer Youth
Experience Survey and
provide data



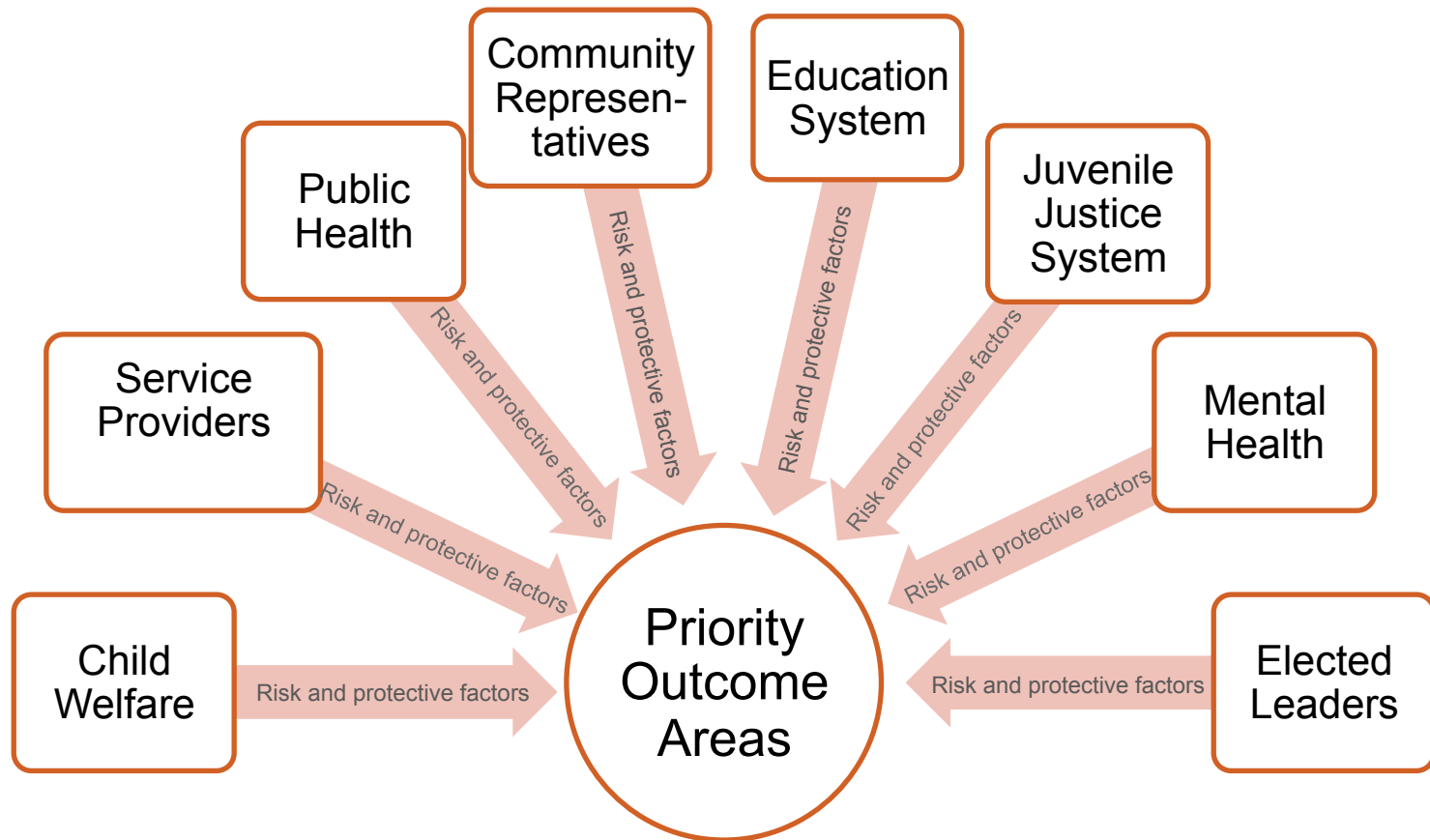
Ability or willingness to
use and share data
across systems



Designated site
coordinator and
implementation
oversight of evidence-
based practices

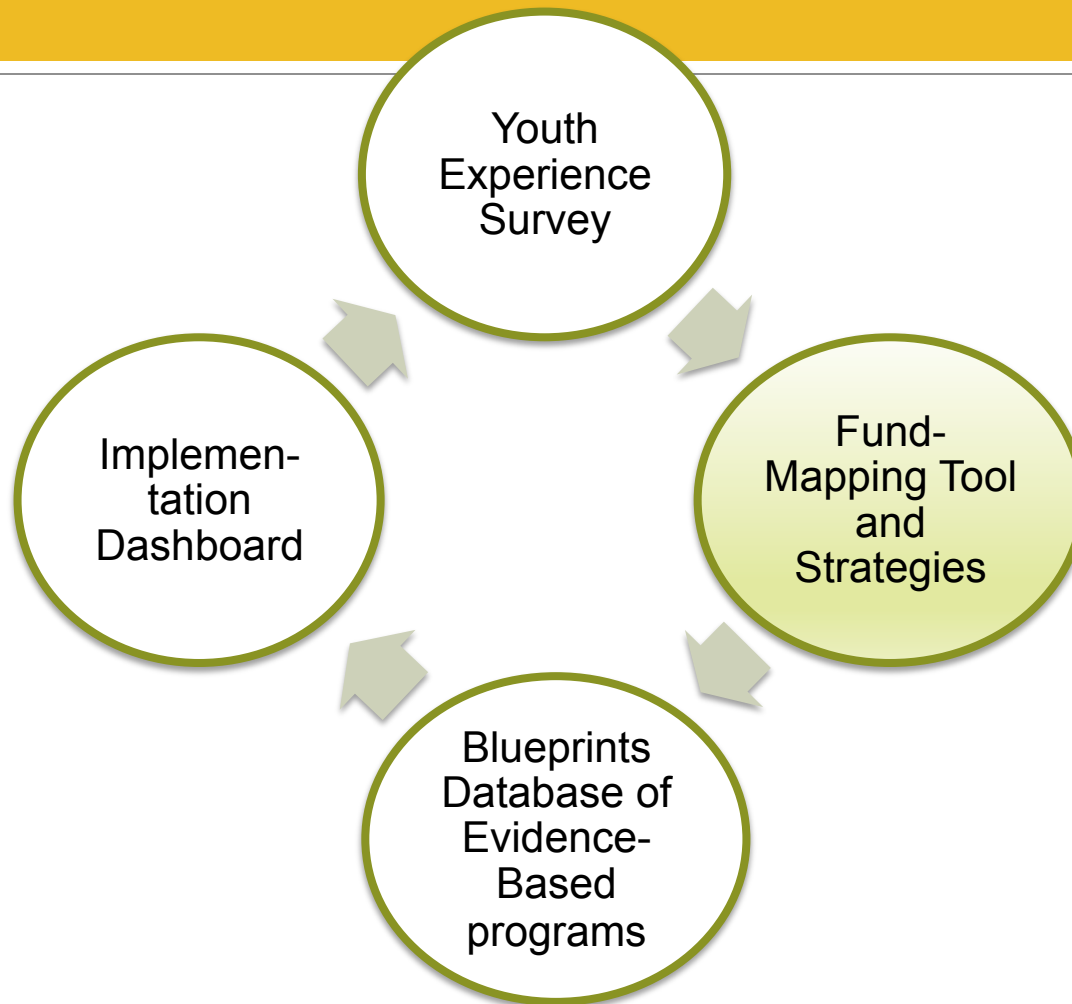
Evidence2Success Community Board

Shared responsibility and accountability = improved outcomes



Public systems and the community working together

The Evidence2Success Process



TOOLS AND TECHNICAL ASSISTANCE



Margaret Flynn-Khan

Strategic Financing Toolkit

Financing Core to Evidence2Success Model: Investing Smarter for Greater Returns

- Build public agency and community capacity to make investment decisions based on well-being data and evidence of what works
- Shift investments so that more funding is invested in tested, effective programs
- Shift investments from remedial interventions toward prevention services
- Support more coordinated investments in shared priorities
- Scale up and sustain partnership infrastructure and programs

Key Components of the Finance Work

WHO

- Designated **Finance Lead** in each site leads and coordinates finance work
- Evidence2Success **Finance Coach** supports Finance Lead
- **Finance Workgroup** develops finance plan

WHAT

- Develop **Fund Map** showing how dollars currently invested in community
- Develop collaborative **Strategic Financing Plan** to guide work of partnership in securing funds

Developing a Strategic Financing Plan

1. What are your financing goals?

- Community board identifies priority programs and needed supporting infrastructure based on assessment data.

2. What financial resources do you need to implement those goals?

- Finance workgroup develops cost estimates for implementing programs and supporting infrastructure.

3. What resources do you have?

- Finance lead coordinates development of fund map information and partners review fund map data for opportunities for redirection.

4. What financing strategies will you implement?

- Finance workgroup identifies financing strategies to support implementation with input from Evidence2Success partnership

5. How will you implement financing strategies?

- Finance workgroup develops work plan

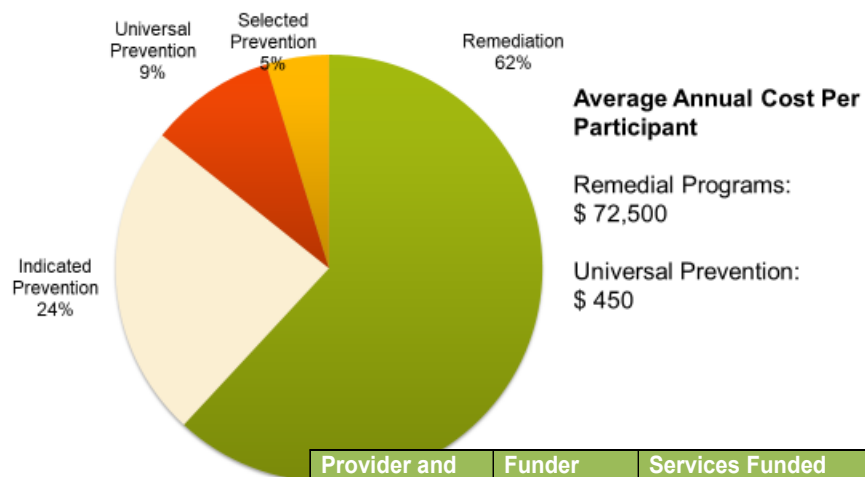
Finance Toolkit

- Guide to completing steps in developing a collaborative strategic finance plan
- Piloted in Evidence2Success sites - Providence, Selma and Mobile, Alabama, and Salt Lake County, Utah
- One component of broader engagement process and set of tools in Evidence2Success
- Most appropriate for cross-sector partnerships focused on achieving shared outcome goals
- Sets the stage for ongoing work to align resources in dynamic funding environment

<http://www.aecf.org/resources/strategic-financing-toolkit-for-tested-effective-programs/>

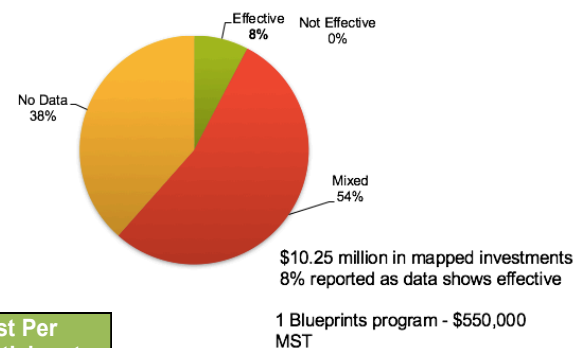
Fund-Mapping Tool: Bringing Together Budget, Program and Administrative Data from **Across Agencies**

How Much Are We Investing in Prevention Versus Remediation?



Provider and Program	Funder	Services Funded	Population Served	Cost Per Participant
Family Services Agency, Positive Parent Training	Department of Children and Families (DCF)	Parent training classes	Parents with a protective services case with DCF.	\$120
Family Resource Center, Strengthening Families	Children's Trust Fund	Parent and child small group training and support	At-risk children and families referred by schools	\$330
MST	Juvenile Court	Intensive case management and individual family support	Court involved youth referred for diversion	\$7,500

What Do We Know About How Effective Our Investments Are?



20

The Funding Landscape: Key Federal Trends

- Strong emphasis on evidence-based programs across agencies in discretionary grant programs
- Every Student Succeeds Act (ESSA)
 - Emphasis on evidence-based programs
 - Title IV-A: Student Support and Academic Enrichment
- Opioid epidemic response leading to new investments
 - State Opioid Response Grant Program
- Family First Prevention Services Act
 - New flexibility to fund evidence-based prevention and family preservation with child welfare funds

Strategic Financing Example: Dallas County

Lead Agency:
Dallas County
Children's
Policy Council

Priorities

- Risky sexual behavior
- Past-month alcohol use
- Low emotional regulation
- Suspended/expelled from school
- Low perceived risk of drug use
- Friend's antisocial behavior
- Poor family management
- Community disorganization

Programs

Project Toward
No Drug Abuse

Positive Family
Support/Family
Check Up

Strong African-
American
Families

Program Leads

Selma City
School District

Dallas County
School District

Dallas County
Family Resource Center

Selma City
School District

Children's
Policy Council

Funding/Resources

Casey Foundation
Grant Funds
City School
Staffing
County School
Staffing
SAMHSA Drug
Free Communities
Grant

Casey Foundation
Grant
Alabama
Children's Trust
Fund

Casey
Foundation
Grant
Department of
Youth Services
Diversion
Funding

Evidence2Success Strategic Financing: Lessons Learned

- Shared vision and trust among partners critical
- Important to focus on both short and longer-term finance needs
 - Articulating three-year goals and budgets
 - Value in having partners at the table, even if they can't support in short term
- Redirection toward evidence-based programs can include redirecting staffing resources as well as \$\$\$
- Diverse base of resources helps you to balance growth/innovation and stability



Rebecca Boxx

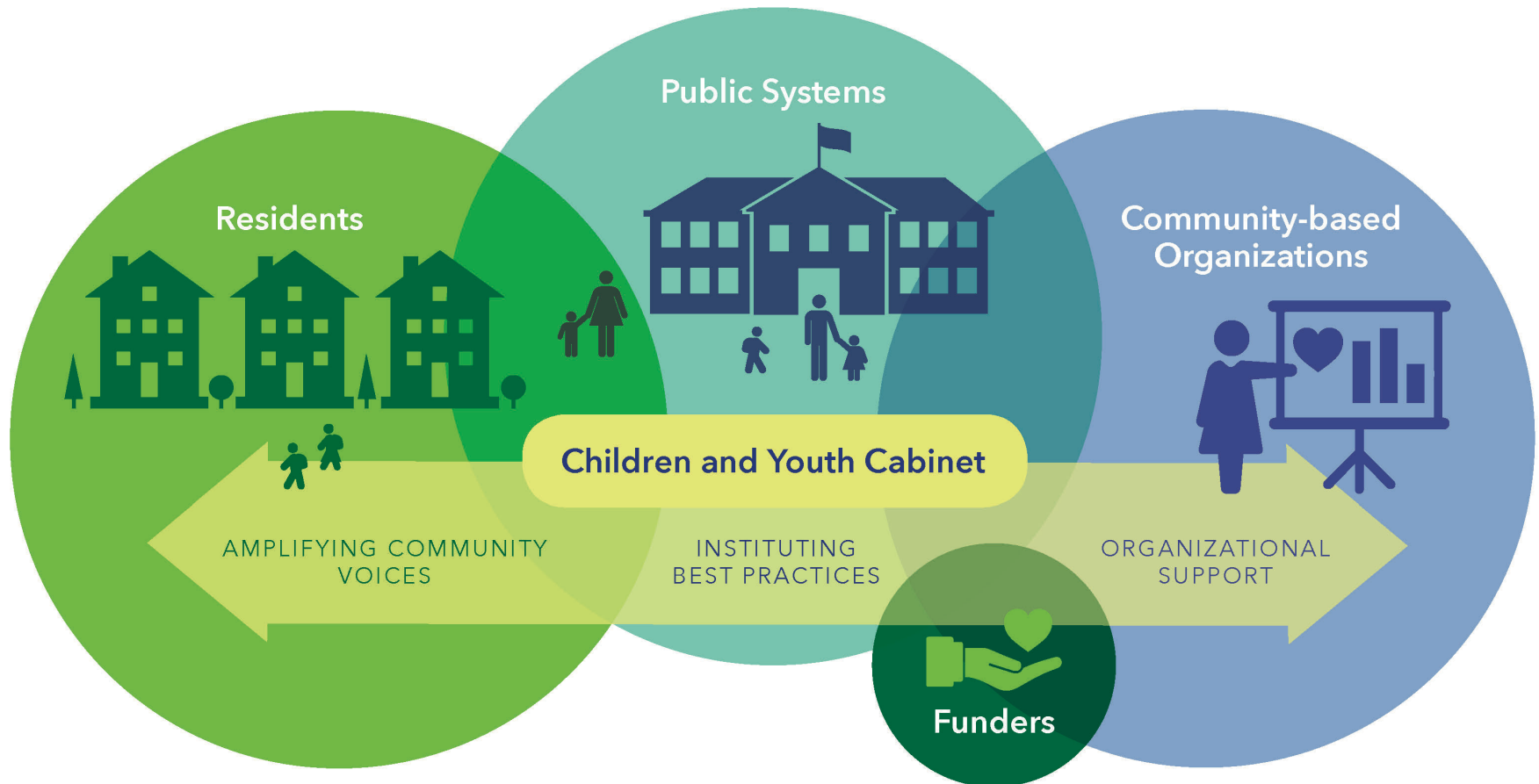
Strategic Financing in Providence

Providence Children and Youth Cabinet

PARTNERING TO DELIVER

COMMUNITY OUTCOMES

In a climate of scarce resources and great need, the Children and Youth Cabinet (CYC) acts as a nimble intermediary bringing residents, public systems, community based organizations and funders together to deliver on shared outcomes.



A Local Perspective – The Need for Innovative Funding Models

- Public systems have fewer resources to invest in prevention, particularly beyond “their” population
- Resources to fund EBPs at scale simply don’t exist
- Private philanthropy can’t bear the burden of scale and sustainability
- Locally – the Evidence2Success framework of shared outcomes, innovative financing, leveraged investment was appealing even necessary
- Evidence2Success also brought significant coaching to build local capacity for strategic financing

Financing Evidence-Based Programs at Scale

- Evidence2Success tools that were highly successful:
 - Fund mapping
 - Strategic finance plan
 - Finance tools
- How traction was established:
 - Building support through convening
 - Issue-based financing
 - Building diverse and sustainable funding
- Case study – Familias Unidas

Financing Infrastructure for Evidence-Based Programs

- Financing specific functions a nimble intermediary can provide (see graphic)
 - Project management
 - Implementation support
 - Culturally relevant programs
 - Joint priority setting
- Finance capacities we developed
 - Navigating financial systems, procurement
 - Collaborative grant writing
 - Convening for finance

How?

AMPLIFYING COMMUNITY PRIORITIES

Culturally Specific and Relevant Programs

Our residents told us that they wanted to see culturally specific and relevant programs for children and youth. This has led the CYC to launch **Familias Unidas**, a program for first generation Spanish speaking families of adolescents. Through our **Health Equity Zone**, the CYC is launching **Strong African American Families** and continues to adapt projects like **Building Trauma Sensitive Schools** to be more culturally relevant for our youth.

Joint Priority Setting

A central element of CYC activities is the engagement of multiple stakeholders, particularly residents and youth to identify shared priorities. Through our **Evidence2Success** initiative, we engage residents in a decision-making process to select programs based on neighborhood needs. Our **Community Partnership** and **Neighbors4Revitalization** groups continue to advance resident priorities and inform the CYC's activities.

INSTITUTING BEST PRACTICES

Connecting Institutions with Proven Effective Programs

As part of the CYC's **School Based Clinical Coordination** we bring together multiple clinical partners with Providence Public Schools to place behavioral health clinicians in half the district's schools. Across all initiatives the CYC also convenes **Implementation Teams** to ensure quality, fidelity and adaptation.

Continually Improving Quality

The CYC's **Building Trauma Sensitive Schools** initiative was born from a strong quality improvement cycle where we continuously ask 'How much, how well and what difference is made?' By asking these questions we were able to bolster student engagement in therapeutic interventions by integrating performance arts and adding facilitators with similar lived experience.

Gathering, Analyzing, and Sharing Meaningful Data

The CYC has a long history of bringing together partners to use and analyze shared data. The **Youth Experiences Survey** asks over 5,000 youth about their experience in schools, neighborhoods and homes. The CYC works with the school district to bring that data to life in community conversations and focus groups with young people.

ORGANIZATIONAL SUPPORT

Project Management

Delivering quality requires a high level of project management. The CYC provides implementation and project management support across all strategies and programs in our portfolio.

Innovative Financing Models

With scarce resources, the CYC delivers innovative financing models that allow **public systems to share outcomes** and therefore co-invest. For instance, **Familias Unidas** has been jointly funded by RI Health, the Public Schools, the City of Providence and RI Department of Children, Youth and Families.

Technical Assistance

The CYC has received intensive coaching over the years in strategic financing, implementation, coalition building and organizational development. Currently, the CYC uses this expertise to provide technical assistance to other **Evidence2Success** sites nationally including Selma, Mobile, Salt Lake, Memphis and Miami.



TWEET @CYCPROVIDENCE

Or contact director Rebecca Boxx
rebecca_boxx@cycprovidence.org
401-662-1637

What is CYC?

WWW.CYCPROVIDENCE.ORG

166 Valley Street, Suite 145,
Providence RI 02909

CYC started as a project at the Annenberg Institute at Brown University. Our early work was focused on gathering, analyzing, and the dissemination of data and best practices in support of Providence's children and youth from cradle to career. Since our beginnings five years ago, we have gone on to become an independent non-profit, taking an active role in helping to create the conditions necessary to achieve positive outcomes for children and youth in Providence. Our new, more nimble structure, allows us to take on project-based initiatives that bring together coalitions of residents, practitioners, and researchers to move more quickly to achieve results.

Growth of Diversified Funding for Scale

- At the start of Evidence2Success, the CYC had an operating budget of approximately \$150,000 with two philanthropic investors
- Five years later, the CYC's operating budget is approximately \$1.2 million from the following funders
 - US SAMHSA
 - Rhode Island Department of Health
 - Rhode Island Department of Children, Youth and Families
 - City of Providence
 - Providence Public Schools
 - The Rhode Island Foundation
 - The Annie E. Casey Foundation
- 60 percent of revenue goes back to the community in contracts for programs and services
- Currently providing technical assistance to other sites

Resources

Casey Foundation Finance Toolkit

<http://www.aecf.org/resources/strategic-financing-toolkit-for-tested-effective-programs/>

Casey Foundation Finance Webinar and Video

<http://www.aecf.org/blog/using-what-works-series-new-strategic-financing-webinar-recording-and-tools>

Casey Foundation Evidence-Based Practice Group Resources

<http://www.aecf.org/work/evidence-based-practice/>

Thank You!



Dirk Butler, Annie E. Casey Foundation
dbutler@aecf.org



Margaret Flynn-Khan, Mainspring Consulting
margaret@mainspringconsulting.org



Rebecca Boxx, Providence CYC
Rebecca_boxx@brown.edu